

Amid the Moonahs

RICHARD KERR ARCHITECTURE

'You feel as though you're swimming into the moonah trees.'

Located at Sorrento, on Victoria's Mornington Peninsula, this two-storey beach house is spread across a few levels. 'The levels follow the contours of the sand dunes,' says architect Richard Kerr.

Designed for a couple with three adult children, the house was conceived as a more permanent abode. 'They wanted a relaxed beach house, but they also wanted something that was comfortable and enduring,' says Kerr. The owners had seen a house at Yea in Victoria, also designed by Kerr. 'They wanted the same materials for their house,' says Kerr, referring to the West Australian limestone and grey ironbark. In addition to these materials, recycled timber piers (once in a wharf in Sydney) frame the entrance. 'The materials recall Frank Lloyd Wright,' says Kerr, referring to the stone plinth in the Sorrento house.

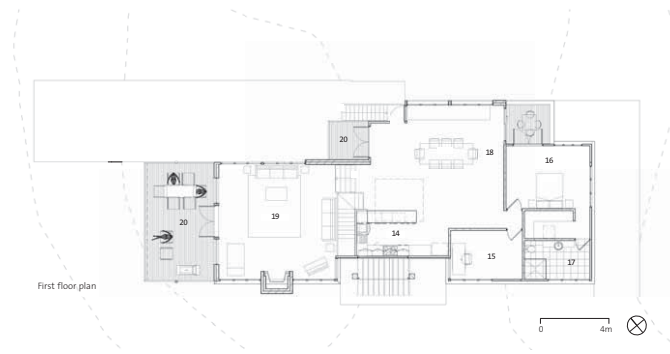
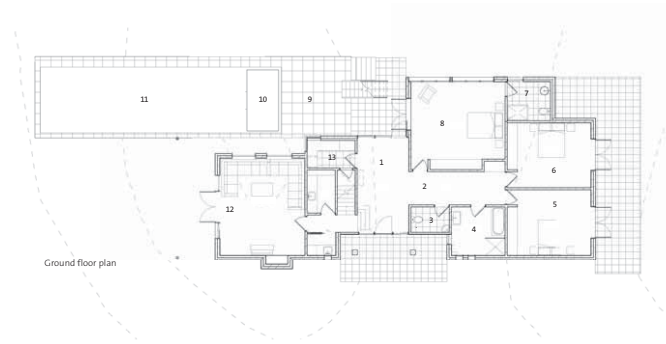
The limestone and timber house is long and narrow and follows the dimensions of the property (24 metres wide by 83 metres long). On the ground floor are three bedrooms, a bathroom and powder room together with the entry lobby. A few steps above the lobby, on the other side of the bedroom wing, is a second living area, used also as a media room.

On the first floor, on the lower side, are the main bedroom, dressing area and ensuite, together with a study. This level also includes the open-plan dining and kitchen area. And on the higher side, elevated five steps above the kitchen and dining areas, is the main living area, which leads to a large deck.

The main living and dining areas also have a Wrightian feel, with a raked timber ceiling in the lounge and a built-in window seat in the dining area. Limestone flooring in both spaces adds to the slightly earthy texture in the home. 'It seemed appropriate to place the main living spaces on the first floor. That's where the views are,' says Kerr, who appreciates the view from the deck. 'From here, you look above the moonahs as well as under the canopy,' he says.

One of the other best vantage points is from the swimming pool, half of which features an infinity edge. The pool projects over the dunes, where the land falls away. 'You feel as though you're swimming into the moonah trees,' says Kerr.





- 1 Entry
- 2 Hall
- 3 Powder room
- 4 Bathroom
- 5 Bedroom 4
- 6 Bedroom 3
- 7 Ensuite
- 8 Bedroom 2
- 9 Pool terrace
- 10 Spa
- 11 Pool
- 12 Living
- 13 Kitchen
- 14 Kitchen
- 15 Study
- 16 Bedroom 1
- 17 Ensuite
- 18 Dining
- 19 Main living
- 20 Deck



